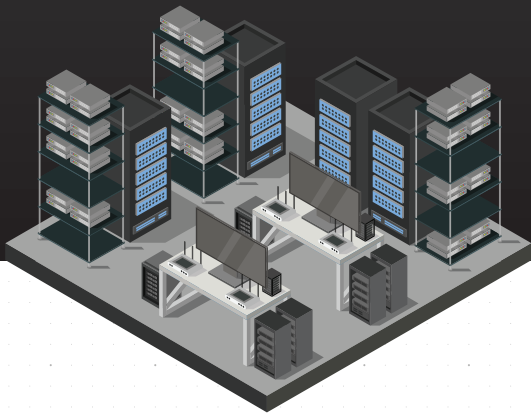


ON-PREMISES



VS

THE CLOUD



BACS

CONSULTING
GROUP

ON-PREMISES

THE CLOUD



COST



- Large initial **CapEx**
- Predictable, but might lead to **overprovisioning**

- Pay-as-you-go **OpEx**
- No **hardware** costs



SCALABILITY



- **Limited**; manual effort to scale
- **Infrastructure** restrictions

- **Instant**; global reach



SECURITY



- Full **physical** control
- **Customizable** protocols

- Advanced features and **compliance certifications**



MAINTENANCE



- Manual updates; **potential for downtime**

- Automatic updates; **continuous monitoring**



ACCESSIBILITY



- Limited to **internal network**; slower VPNs

- Access anywhere; **real-time collaboration tools**